



**Ferguson-Florissant  
School District  
Reentry Handbook  
McCluer North  
High School  
2020-2021 School Year**



**S**afety  
**A**ccess  
**S**chedules  
**S**upport

# TABLE OF CONTENTS

[Letter from Dr. Davis](#)

[Letter from Building Principal](#)

[School Contacts](#)

[Frank T. Williams \(Principal\):](#)

[fwilliams@fergflor.org](mailto:fwilliams@fergflor.org) (314) 506-9216

[Arrival Procedures](#)

[Attendance](#)

[Athletics](#)

[Breakfast](#)

[Bus Transportation](#)

[Bus Transportation \(SSD\)](#)

[Classroom Expectations](#)

[Cleaning - Building Readiness](#)

[Dismissal Procedures](#)

[Emergency Drills](#)

[Field Trips](#)

[Gradebook - TylerSISK12 vs Canvas](#)

[Hallway Expectations](#)

[Health and Safety](#)

[Daily Health Screening](#)

[If Symptoms Develop While at School](#)

[HVAC](#)

[Inclement Weather](#)

[Instruction](#)

[Examples of Class Instruction](#)

[Library](#)

[Lockers](#)

[Lunch](#)



[Masks](#)

[Meetings](#)

[Physical Education](#)

[Restrooms](#)

[School Nutrition](#)

[School Hours](#)

[Schedules](#)

[Student Support](#)

[Supplies](#)

[Technology](#)

[Visitors](#)



# Letter from Dr. Davis

Dear Ferguson-Florissant Families,

I am excited to welcome you back to in-person learning in the Ferguson-Florissant School District. We have missed seeing you learning and growing in our buildings. We know that nothing beats face to face instruction with students and teachers in the same physical classroom.

It is my hope that this handbook will serve as an important and user-friendly tool for all families navigating our return to in-person learning. In this handbook, you will find much information about how we plan to address health, safety, and instructional delivery within each of our buildings.

While we have been planning for an eventual return for many months, there undoubtedly will be some bumps in the road. I appreciate your patience and support as we move forward together in-person and virtually. Please keep the lines of communication open with your child's teacher and principal, so we can address concerns as we enter this next phase of learning.

Onward together,

Dr. Joseph Davis  
Superintendent



## Letter from Building Principal

Dear McCluer North Families and Caregivers,

Our whole school community has worked very hard to get to the point where we will start in-person learning for many of our students. We remain committed to providing the best possible learning experience for all of our students, whether learning in person or virtually.

In the coming months as we engage in new and challenging experiences together, please reach out to your child's teachers and I so that we can support your child. Thanks for your support of our school community and I look forward to many bright moments amidst the backdrop of this challenging year.

Sincerely,

Frank T. Williams

Principal

McCluer North High School



## School Contacts

Frank T. Williams (Principal):	<a href="mailto:fwilliams@fergflor.org">fwilliams@fergflor.org</a>	(314) 506 - 9216
Erin King (12th Grade Assistant Principal) :	<a href="mailto:eking@fergflor.org">eking@fergflor.org</a>	(314) 506 - 9220
Bobby Hughes (11th Grade Assistant Principal) :	<a href="mailto:bhughes@fergflor.org">bhughes@fergflor.org</a>	(314) 506 - 9318
Donald Frazier (10th Grade Assistant Principal) :	<a href="mailto:dfrazier@fergflor.org">dfrazier@fergflor.org</a>	(314) 506 - 9210
Dr. Anissa Harris (9th Grade Assistant Principal) :	<a href="mailto:aharris@fergflor.org">aharris@fergflor.org</a>	(314) 506 - 9213
Keith Rhodes (Athletic Director):	<a href="mailto:krhodes@fergflor.org">krhodes@fergflor.org</a>	(314) 506 - 9233
Dr. Carl Imhof (SSD Area Coordinator):	<a href="mailto:cimhof@fergflor.org">cimhof@fergflor.org</a>	(314) 810 - 9766
Phyllis Lewis (Office Manager):	<a href="mailto:plewis@fergflor.org">plewis@fergflor.org</a>	(314) 506 - 9207
Eboni Harris (School Nurse) :	<a href="mailto:ebharris@fergflor.org">ebharris@fergflor.org</a>	(314) 506 - 9231
Christina Schwan (Guidance Office OP):	<a href="mailto:cschwan@fergflor.org">cschwan@fergflor.org</a>	(314) 506 - 9223
Megan Gunn (12th Grade Counselor):	<a href="mailto:mgunn@fergflor.org">mgunn@fergflor.org</a>	(314) 506 - 9245
Kristin French (11th Grade Counselor):	<a href="mailto:kfrench@fergflor.org">kfrench@fergflor.org</a>	(314) 506 - 9227
Jenny Speak (10th Grade Counselor):	<a href="mailto:jspeak@fergflor.org">jspeak@fergflor.org</a>	(314) 506 - 9237
Kristi Fitzgerald (9th Grade Counselor):	<a href="mailto:kfitzgerald@fergflor.org">kfitzgerald@fergflor.org</a>	(314) 506 - 9226
Jill Gianopulos (Registrar):	<a href="mailto:jgianopulos@fergflor.org">jgianopulos@fergflor.org</a>	(314) 506 - 9228
Naomia Anderson (Attendance OP):	<a href="mailto:nanderson@fergflor.org">nanderson@fergflor.org</a>	(314) 506 - 9211
Brenda Morris (12th Grade OP):	<a href="mailto:bmorris@fergflor.org">bmorris@fergflor.org</a>	(314) 506 - 9219
Scharnae Johnson (9th Grade OP):	<a href="mailto:sajohnson@fergflor.org">sajohnson@fergflor.org</a>	(314) 506 - 9212
Jaquisha McCoy (Bookkeeper):	<a href="mailto:jmccoy@fergflor.org">jmccoy@fergflor.org</a>	(314) 506 - 9206
Renee Scott-Caine (Athletics OP):	<a href="mailto:rscottcaine@fergflor.org">rscottcaine@fergflor.org</a>	(314) 506 - 9234



## Health and Safety

Health and Safety guidelines are outlined in the handbook.

- Masks are required for everyone
- Physical distancing
- Hand washing & hand sanitizing
- Clear backpacks
- Breakfast and lunch
- Restroom

## Access

All students have access to a Chromebook.

- Canvas Learning Management System will be utilized daily.
- Instruction will be concurrent
  - In-person and virtual instruction will occur at the same time with a teacher
- Students will bring charged devices daily.

## Security

- School hours are 8:05 AM-3:10PM for in-person and virtual
- Arrival and Dismissal are outlined below.

## Support

Students will be provided academic, behavioral, and social-emotional needs.

- Instructional blocks for all core instruction and tier II and III supports
- Social-Emotional Curriculum is taught during advisory
- Counselors will continue to support schools



# Arrival Procedures

## Arrival

Students are not able to have access to school until 7:45 am. Students should not plan to arrive or be dropped off prior to 7:45 am. Students who are dropped off will enter the building on the north side of campus, through door 1.

Students who arrive on the school bus will enter on the south side of the campus through door 17.



Upon arrival, students will have the opportunity to get a grab-and-go breakfast.





Students may eat in the cafeteria, the cafeteria concourse, the upper advisory, or the lower advisory. To ensure social distancing, only one student is allowed to sit at a table.



Upon finishing grab and go breakfasts, students will go to their first block class. Custodial and Cafeteria staff will clean tables with disinfectant once a student finishes their breakfast. At the conclusion of breakfast, the custodial staff will clean and disinfect the cafeteria.



# Attendance

## *In-Person*

Although student attendance is always important for academic success, we know during these times our families will be extra cautious sending their child to school when they are exhibiting symptoms that could be contagious. We appreciate your efforts to screen your child daily for symptoms and keep them home if there are any concerns. Please continue to call in any absence and provide information that would be important to the overall health of our school. If your child will be staying home due to illness, please do the following:

- **Call the Attendance Line to report your child's absence (314-506-9211).**
- If your child has a POSITIVE COVID test result, please contact your child's grade level administrator immediately.
- If your child has to QUARANTINE due to close contact with a positive case outside of school, please contact your child's grade level administrator.

Please note: **If your child is experiencing symptoms as noted above, please do not send them to school and call the school to alert them that they are staying home.**

We encourage you to reach out to your doctor prior to returning to school. If you have any health questions or concerns, please reach out to your school nurse.

## *Virtual*

- Students are expected to attend class via Zoom at the beginning of each class period to receive instruction from their teacher for that day. Students should refer to the teacher's Canvas page for Zoom links.
- If your child is not feeling well enough to attend class virtually, they should contact their teacher for missed work and instruction.

# Athletics

## *In-Person*

The athletic department of Ferguson-Florissant School District continues to balance the importance of physical activity and athletics for students with the reality of COVID-19 in the country. The district has developed a Return to Play Plan that has been approved by the St. Louis County Health Department. The guidelines were developed to limit the transmission of COVID-19 as students engage in sporting activities and continue receiving quality instruction. We have partnered with the St. Louis County Health Department and the Missouri High School Activities and Athletics Association to outline best practices for our students who engage in athletics and activities. [Return to Play Plan](#)

## *Virtual*

Students participating in virtual learning will need to complete a screener each time they enter the school for practices and activities.



# Breakfast

## In-Person

Breakfast will be available for students before school starts at 7:45 AM as a grab-and-go meal. Upon arrival, students will have the opportunity to eat a grab-and-go breakfast. Students that are dropped off by parents or drive themselves to school will enter on the North side of the campus through door 1. Students who enter through door 1, and wish to participate in grab-and-go breakfast will find cafeteria staff located at tables just a few yards past the security booth.

Students who arrive on the school bus will enter on the south side of the campus through door 17. Students who enter through door 17 and wish to participate in grab-and-go breakfast will find cafeteria staff located at tables just approximately 15 yards from the door 17 entrance.



Students may eat in the cafeteria, the cafeteria concourse, the upper advisory, or the lower advisory. To ensure social distancing, only one student is allowed to sit at a table. Upon finishing a grab-and-go breakfast, students will go to their first block class. Custodial and cafeteria staff will clean tables with disinfectant once a student finishes their breakfast. At the conclusion of breakfast, the custodial staff will deep clean the cafeteria. **The school campus will be closed to all visitors, hence students will not be able to receive breakfast that is dropped off or ordered.**

## Virtual

Breakfast and lunch are available on Fridays and students will receive five days worth of meals. The schedule for locations and delivery times can be found on the district website. Virtual students will be provided a lunch pass that they will need to show in order to be able to pick up a box of meals. A pass will be assigned for each student in a family. [Click here for more information.](#)



## Bus Transportation

### *In-Person*

Continuing safety measures on our school busses will be important in keeping our students healthy during this time. All bus drivers will be required to wear masks and have minimal contact with students. The interior of the bus will be disinfected with special attention to high touch surfaces. The following will be implemented on buses to ensure proper health safety to reduce the likelihood of spreading disease:

- Students will be required to wear face masks at bus stops and while on the bus at all times.
- When waiting at bus stops, students should maintain at least six feet of social distancing when possible.
- Hand sanitizer will be available upon entry and while riding the bus.
- All buses will be wiped down and disinfected.
- To minimize the spread of germs, buses will be loaded starting at the back of the bus, then moving to the front.
- Same-family households will be expected to sit together in a seat when possible.
- Students will be expected to sit in the same seat going to and returning from school.
- Students should remain in their assigned seats while on the school bus.
- Students receiving SSD transportation at MNHS will be dropped off at the North Student Parking Lot where they will be met by SSD staff
- Students will then be escorted to the SSD classroom(s) to receive their Grab and Go breakfast.



### *Virtual*

Transportation is not required for virtual instruction.

## Classroom Expectations

### *In-Person*

- Students are expected to adhere to the Ferguson Florissant School District Student Expectation Code.
- Students and staff must wear masks at all times.
- Students should [practice good hand hygiene](#) as they enter and exit the classroom. with hand sanitizer. Hand sanitizer will be available in all classrooms.
- Students are required to maintain social distance in the classroom.
- Students must sit in seats assigned by the teacher. No mingling or clustering with classmates before or after class.
- Teachers will work to limit unnecessary movement during class.
- Student desks will be separated a minimum of 3 feet to optimal 6 feet in classrooms.
- Students must bring necessary materials for class including school supplies,



- textbooks, and Chromebooks fully charged.
- Students will adhere to all health and safety measures for labs or activities. These measures will include social distancing during activities and hand hygiene before and after.
- In-person students are expected to attend class in-person. Virtual students are expected to attend class virtually. If absent, virtual or in-person, students will need to contact the teacher regarding missed instruction and assignments.
- Students are required to bring their Chromebooks to class daily.
- Students will continue to use the Canvas platform from which they have accessed their learning all school year.

### *Virtual*

- Students that chose to remain virtual will continue their studies online.
- Follow appropriate online “netiquette” expectations, outlined in the Digital Citizenship Contract for Students.
- Stay informed by checking your Canvas account and district email daily, as appropriate
- Students should establish their learning routine and prepare a space where they can work effectively and successfully. This should include having a quiet space in the home where they can participate in video conversations with others, live lessons, or two-way communication with teachers.
- Prepare a daily schedule.
- Be an active learner, proactively communicating with teachers if you need additional support or may not be able to meet assigned deadlines
- Whenever possible, create balance in your day so that you’re not sitting and/or online for hours at a time
- Students participating via a Zoom video session, please dress appropriately for school and make sure there is nothing behind you that you don’t want others to see. When using Canvas, only submit audio/video files that are appropriate.
- Engage in all learning with academic honesty and integrity. Do not falsify information about yourself or impersonate others online.
- Ask questions, be persistent, and work to solve problems that may occur. Nothing about this experience is normal, so we must be patient and accept there will be challenges and missteps along the way. Be kind to your teachers and your family members. Don’t be afraid to tell others when you’re frustrated or upset, but know that you can’t simply give up, either. We will be better when we support each other.

## **Cleaning - Building Readiness**

### *In-Person*

- All spaces have been cleaned and disinfected and equipped with disinfecting spray or disinfecting wipes for adult use.
- Each classroom has been equipped with a hand sanitizer floor stand and dispenser. Hand sanitizer dispensers have been mounted throughout the building in hallways, office areas, cafeterias, and gyms.



- Custodial staff will disinfect high-traffic areas as often as possible throughout the day, and all surfaces will be cleaned and disinfected each evening.
- Buildings will be thoroughly cleaned each evening with a focus on high-touch areas.
- Restrooms will be checked and cleaned regularly throughout the day and documented on the back of the door.
- Staff is encouraged to utilize the spray disinfectant and paper towels available for use as needed.
- Deep cleaning by custodial staff will occur with the notification of a positive COVID case.

*Virtual*

No extra precautions are required for virtual instruction.

## Dismissal Procedures

Students will be dismissed through a staggered dismissal schedule to prevent congestion at common exits in the building. Students will be expected to remain in their classroom until they are dismissed. Students who are carpooling and are dismissed at separate times should make a plan to meet at the driver’s car if necessary. If a student is arriving late to school or leaving early, the student will upon entering the building report to the attendance office and speak with Ms. Anderson regarding the student’s attendance needs for the day. Ms. Anderson will administer late slips for students arriving after 8:20 AM; students arriving after this time must have a late slip to enter class. Ms. Anderson will also ask for documentation stating the need for an attendance change (leaving early) that day (parent phone call, doctor’s note, etc.)

*Virtual*

The school day is 8:05 AM - 3:10 PM. Students are expected to actively engage in virtual instruction daily.

## Emergency Drills

Each school will schedule planned emergency drills that incorporate social distancing. When evacuating the building for an emergency drill, students will maintain a social distance of at least 3 feet and are required to wear their masks. Once outside students will maintain a three-foot distance from other students.

## Field Trips

Schools will participate in virtual field trips only.



## Gradebook - TylerSISK12 vs Canvas

Tyler SISK12 will continue to be our official grade reporting system. To accurately understand your grade you should continue to refer to grades in TylerSISK12. In Tyler SISK12, some courses may also have category weights for assignments and assessments to calculate a student's overall progress. Canvas is used as a curriculum management tool. While Canvas can show individual scores for some assignments, it does not show the accurate class average since categories are not weighted and not all assignments are collected and scored in Canvas.



## Hallway Expectations

Hallway movement will be limited whenever possible. Students are expected to walk to the right. During class transitions, staff members will monitor students to encourage physical distancing. When in line, students will be reminded to allow 6 feet distance between themselves and others. Teachers will supervise hallway transitions to remind students not to cluster with friends in classrooms or hallways. During the passing period, students are encouraged to move from one class to another without congregating.

## Health and Safety

### *In-Person*

It is the goal of the Health Services Department to provide safety and support to all Ferguson-Florissant School District Students and Staff. Nurses and Clinic Aides have been trained on the procedures that should be followed if students or staff should become ill while at school. In addition to our regular health office, our building has a designated isolation room where individuals who may be experiencing COVID-19 symptoms may rest while waiting to be picked up. It is important that students experiencing COVID-19 symptoms be picked up immediately. Please be sure that your contact information is up to date so that we can provide the best care and highest level of safety to our McCluer North family.

All who enter the building must wash their hands or use hand sanitizer. In addition to the restrooms, all learning spaces are equipped with stand-alone hand sanitizers. Signage and frequent reminders will be given so that students are encouraged to wash their hands and/or use hand sanitizer frequently.

Students and staff members with disabilities alone may not be at a higher risk for getting COVID-19 or having severe illness. Most people with disabilities are not inherently at a higher risk



for becoming infected with or having severe illness from COVID-19. Click here on more [CDC information for people with disabilities](#).



## Daily Health Screening

Daily screening of students by caregivers is required every day for in-person learners prior to coming to school. The next page has a checklist of symptoms that will help you decide to keep your child at home. If any of the symptoms are left unchecked (your student shows the symptom), the student should remain at home. Expectations and protocols for daily screening will be communicated to families prior to the start of in-person instruction, with regular reminders provided throughout the semester. Please plan to make this daily screening a part of your morning routine.

**Ferguson-Florissant**  
**Morning Routine:**  
Screen your child for symptoms so we can keep everyone healthy at school.

- No fever or chills
- No cough
- No shortness of breath or difficulty breathing
- No sore throat
- No headache
- No muscle aches
- No nausea, vomiting or diarrhea
- No new loss of taste or smell
- No runny nose or congestion
- No close contact with a person with COVID-19 in the last 14 days

Sick? Stay Home!

Source: Missouri Department of Elementary & Secondary Education

If your child is experiencing symptoms as noted above, please do not send them to school and call Ms. Anderson in the attendance office to alert them that they are staying home. We encourage you to reach out to your doctor prior to returning to school. If you have any health questions or concerns, please reach out to your school nurse.

Monitoring Symptoms - [At Home Health Screener](#)





It is important for us to continue to monitor our own symptoms daily to prevent transmission through our classrooms and schools. Families should monitor their child's health symptoms each morning prior to school. If your child is displaying symptoms please, please keep them home.

## **If Symptoms Develop While at School**

Students or staff who develop symptoms suggestive of COVID-19 or those with a positive response to the questionnaire during the school day will be assessed by the school nurse, with the district nurse available for consultation, as needed.

**Health Office Guidelines: [FLOWCHART](#)**



## **HVAC**

The HVAC systems have now been calibrated to provide fresh air at volumes that exceed those recommended in response to COVID-19. All Air Handling Units (AHUs) have been inspected and are working properly, all exhaust fans are in working order. District-wide, all air filters have been replaced and will be replaced based on a stringent schedule to assure safety. The HVAC systems operate using filtered outdoor air while the air in the building is replaced every 15 minutes.

## **Inclement Weather**

### *In-Person*

If there is inclement weather, virtual instruction will occur for all students. Weather conditions will be monitored during the school day and decisions will be based on an assessment of roads and the forecast.

### *Virtual*

Instruction will continue.

## **Instruction**

### *In-Person and Virtual*

Students will engage in quality instruction while receiving remote or in-person instruction. Concurrent teaching will occur daily. This model of instruction is one lesson to two audiences. Some students are in-person and others are remote. Learning is maximized regardless of students' modality.

The Canvas Learning Management System will continue to be a critical component for instructional delivery. Students and teachers will continue to use the Canvas daily in order to access and manage learning materials.

Each block of instruction is 85 minutes. Students will receive 60 minutes of core instruction and 25 minutes of additional academic support. Materials needed are fully charged Chromebooks and earphones.

## **Office Hour/Student Support Time**

Student Support Time is an opportunity for students to seek additional help from their teachers. Students can seek additional academic, behavioral and social-emotional support.

There are multiple opportunities to connect with staff:

- Arrange for a Zoom call with the teacher, counselor, or social worker. Virtual and in-person students can use Zoom on Friday afternoons to meet with their teacher, counselor, or social worker for additional support.
- Email teacher with questions.
- Each instructional block has a designated time for intervention and/or enrichment.

### *Virtual*

Teachers and students will use Canvas for instructional delivery.



## Examples of Class Instruction

Teachers will work with both in-person students and virtual students on best practices, curriculum content, and resources. The chart below helps describe how class instruction may look for *virtual* and *in-person* students.

In-Person Students	Virtual Students
<b>Expectations</b>	<b>Expectations</b>
<p>There may be times when your child will be asked to work independently in class so that teachers can work with in-person students.</p> <p>Your child will follow the virtual schedule for the class they are in if they are unable to attend due to symptoms or if they are quarantined.</p> <p>All staff and students will be required to wear masks at all times.</p> <p>Parents will conduct a daily health screening for their children. If students are showing symptoms, parents will keep their children home and communicate their absence.</p> <p>Each class will have a required seating chart.</p> <p>Students will not be allowed to congregate in the hallways before, during, or after school.</p> <p>For health and safety reasons, the building will open at 7:45 am.</p>	<p>Your child needs to log on to the classroom Zoom at the specified time for each class period for attendance and to receive instructions for the class.</p> <p>Teachers may choose to live Zoom lessons with at-home students, or they may serve virtual students with a combination of live Zoom and small group learning (ie. learning that students obtain independently)</p> <p>Students can expect to work independently at times throughout the day.</p> <p>Your child may be included in additional class activities (with students who are virtual) depending on the class or activity that would require them to remain on Zoom for an extended period of time</p> <p>Zoom links are posted on the Canvas landing page for the course.</p>
<b>Expectations for Both Virtual and In-Person Learners</b>	
<ul style="list-style-type: none"> <li>● The classroom teacher is responsible for both virtual and in-person students.</li> <li>● Both virtual and in-person students work on the same content; however, delivery will vary. Your child may have independent work to complete outside their school day.</li> <li>● Your child will continue to use Canvas. Your child may have independent work to complete outside their school day.</li> <li>● Teachers will continue to use Canvas as a communication hub for both virtual and in-person students (Course information page, Inbox, Calendar, Modules [Lessons] Link)</li> <li>● Teachers will determine how to deliver instruction for virtual and in-person students based on best practices in their content areas.</li> <li>● Virtual students and in-person students will have a consistent format of assessment.</li> </ul>	



# Library

## *In-Person*

To ensure the continued health and safety of our students while still providing services for students in the library the following guidelines have been established:

- Before School - students may visit the library before school to check out or return materials, study/work independently. Spacing will be enforced.
- After School - Students may only stay with an assigned teacher or group. Students must remain in the library until dismissal or when their transportation arrives.
- Procedures while visiting the library:
  - Masks must be worn correctly at all times
  - Students should sanitize their hands when entering and leaving the library. Hand sanitizer will be available in the library.
  - Students must sign in and out using the Chromebook station. ID will be scanned.
  - Students should **practice social distancing** while waiting to sign in or out, browsing the shelves, or sitting for independent study.
  - If students are using the library for independent study they will be assigned a specific seat. Seating will be spaced out in the library. Students will not be able to sit and study with friends
  - Students will be able to access the print station (desktop computers) of the library. Students should sanitize their hands before and after using this station.
  - No food or drink will be allowed in the library.



## *Virtual*

The librarian will co-teach with classroom teachers to offer guidance on our e-shelf and databases for reading and research.

# Lockers

## *In-Person*

Academic Lockers - Students may request a locker through their grade level principal. Lockers will be issued on a first come first serve basis, and strategically placed to allow students to social distance. Students can expect to have no less than six feet of lockers



between them and another student. It is strongly encouraged that those involved in extracurricular activities request a locker so that they are able to store the items they will need for the extra-curricular activity.

PE Lockers - Students enrolled in physical education classes should come to school dressed to actively participate in class. Lockers rooms will not be available for students to change before or after PE class.

Athletic/Team Locker Rooms - Athletes should arrive at practice or games dressed in appropriate uniform or gear. Athletes who are unable to go home prior to practice or games will not be given access to locker rooms.

### Virtual

School lockers are not utilized during virtual instruction.

## Lunch

### In-Person

McCluer North will offer three lunch times for students. First lunch is from 11:05am - 11:35am. Second lunch is from 11:50pm - 12:20pm. Third lunch is from 12:35pm - 1:05pm. Students who have the 3rd block class on the first floor, in the terrace, and all PM NorthTech students will eat during the first lunch shift. Students who have the 3rd block class on the second floor will eat during the second lunch shift. Students who have 3rd block class on the third floor, and all PE classes will eat lunch during the third lunch shift. Cafeteria staff will serve students grab-and-go lunch at three different locations in the cafeteria concourse to ensure social distancing. The floor has been marked to provide students visual aids of where to stand while waiting for grab-and-go lunch.



Every student will receive the same lunch. No additional purchases will be available in the cafeteria during this time. Students may eat in the cafeteria, the cafeteria concourse, the upper advisory, or the lower advisory. To ensure social distancing, only one student is allowed to sit at a table. Custodial and Cafeteria staff will clean tables with disinfectant once a student finishes their lunch. At the conclusion of a lunch shift, the custodial staff will deep clean the cafeteria. **The District campus will be closed to all visitors, hence students will not be able to receive lunch that is dropped off or ordered.**



## Virtual

Breakfast and lunch are available on Fridays and students will receive five days worth of meals. The schedule for locations and delivery times can be found on the District website. Virtual students will be provided a lunch pass that they will need to show in order to be able to pick up a box of meals. A pass will be assigned for each student in a family.

## Masks

### In-Person

Masks are required to be worn at all times. If students or staff forget their masks or do not have a mask, a disposable mask will be provided. The most effective masks are made with at least 2 layers of fabric that cover their nose and mouth without large gaps and include ear loops or ties for adjustments. Please note, the following types of masks are not allowed as they are less effective in blocking respiratory particles:

- Bandanas and gaiters
- Masks with a breathing valve or “button” vent

If a student forgets his/her mask or does not have a mask, disposable masks are available and will be provided as needed. Masks will be available in classrooms, at the main office, and in the nurse's office. All masks should be changed if they become wet or soiled, dropped on the floor, or otherwise contaminated. Students will be taught and reminded not to touch the front or inside of the mask and to use the side loops to put on and take off the masks.

## Meetings

### In-Person

Meetings for student support such as IEP meetings or 504 meetings will continue to be held virtually. Parent-Teacher conferences will also continue to be held virtually. Any other meeting needed should be scheduled in advance with your child's grade level office or guidance counselor.

### Virtual

All meetings will be held virtually.

## Physical Education

### In-Person

The District will make every effort to hold Physical Education (PE) classes outdoors. In the event that PE cannot be held outdoors, classes will take place in a gym, weight room, or a classroom with physical distancing for aerobic activities, while also wearing a mask.

Until further notice, High School students will not change their clothes for participation in PE,



and the locker rooms will not be accessible. Please wear proper athletic footwear and attire, regardless of the location.

Students should also be prepared to participate in outdoor classes by wearing proper outdoor attire (jackets, sweatshirts, long sleeve shirts, sweatpants, etc.).

During PE classes, all physical distancing guidelines and practices will be followed. During indoor classes, if physical distance guidelines pertaining to physical activity cannot be followed, classes will focus on the cognitive and affective domains of PE. Examples of these types of lessons would be presentations, reading articles, class discussions, or other methods of learning that do not require physical activity.

All students will be required and encouraged to participate in their assigned PE class, regardless of the class being administered in the live, synchronous, or asynchronous format. Grading criteria will be presented and reviewed by each student's teacher.



### *Virtual*

All students will be required to participate in their assigned PE class, regardless of the class being administered in the live, synchronous, or asynchronous format. Grading criteria will be presented and reviewed by each student's teacher.

## Restrooms

### *In-Person*

Restrooms will be open during passing periods. Students should practice social distancing in the restroom, wear masks, and hand hygiene. Hand sanitizer will be available by the restrooms.

Students will be expected to continue to move from class to class during passing periods and avoid congregating with friends during this time. It is important that students do not cluster in halls to allow for maximum space for students to safely and comfortably travel.



Signage will be in place to maintain six feet of social distancing outside of the bathrooms, and to ensure handwashing and/or sanitizer usage.

Our custodial staff will disinfect often with full sanitization.



### *Virtual*

Teachers prefer students to use the restroom during passing periods of the virtual schedule.



# School Nutrition

## *In-Person*

For in-person sessions, breakfast and lunch will be available as a grab-and-go meal during designated breakfast and lunch times. No additional purchases will be available in the cafeteria during this time. Students will be supervised to wash hands before and after eating all meals. Proper sanitation protocols (hand washing or sanitizing prior to consumption; appropriate containers for food waste; physical distancing; not sharing food/drink) will be followed. The use of the cafeteria itself will be determined on a case-by-case basis.

## *Virtual*

The district will continue the healthy school nutrition program our families rely on to both in school students and virtual learners. All students have the opportunity to receive school meals in a safe and comfortable environment so that they are ready to succeed in academic and social activities.



# School Hours

## *In-Person*

The school day is from 8:05 AM-3:10 PM. Students may enter the building at 7:45 AM and participate in grab-and-go breakfast.

## *Virtual*

The school day is from 8:05 AM - 3:10 PM.





# Schedules

## *In-Person*

Monday through Thursday, students receive instruction in person. On Friday, students complete asynchronous instruction. They do not attend in person.

Students will be able to access their schedules from the Tyler Portal. A great deal of time, effort, and thought has gone into the process of student placement for the 2020-2021 school year courses were created based on student needs and interests and are balanced. Our class lists are structured to provide equitable class sizes at each level. Moving students is difficult without causing imbalances and inequities; therefore we will not honor requests for change of teacher, lunch, P.E., or study hall.

## *High School*

Virtual students are expected to join class at the beginning of each hour, and remain engaged until the end of class.

A Day Mon. - Thur.			B Day Mon. - Thur			Fridays
	Time	Length		Time	Length	
1st Block	8:05 - 9:30	85 min	5th Block	8:05 - 9:30	85 min	Asynchronous 8:05 - 3:10
2nd Block	9:35 - 11:00	85 min	6th Block	9:35 - 11:00	85 min	
3rd Block 1st lunch	lunch: 11:05 - 11:35 3rd block: 11:40 - 1:05	30 min 85 min	7th Block 1st lunch	lunch: 11:05 - 11:35 3rd block: 11:40 - 1:05	30 min 85 min	
3rd Block 2nd lunch	3rd block: 11:05-11:50 lunch: 11:50 - 12:20 3rd block: 12:25 - 1:05	45 min 30 min 40 min	7th Block 2nd lunch	3rd block: 11:05-11:50 lunch: 11:50 - 12:20 3rd block: 12:25 - 1:05	45 min 30 min 40 min	
3rd Block 3rd lunch	3rd block: 11:05 - 12:35 lunch: 12:35 - 1:05	90 min 30 min	7th Block 3rd lunch	3rd block: 11:05 - 12:35 lunch: 12:35 - 1:05	90 min 30 min	
Advisory	1:10 - 1:40	30 min	Advisory	1:10 - 1:40	30 min	
4th Block	1:45 - 3:10	85 min	8th Block	1:45 - 3:10	85 min	



## McCluer North Bell Schedule

Bells	1 <sup>st</sup> lunch students	2 <sup>nd</sup> lunch students	3 <sup>rd</sup> lunch students
7:40	Grab & Go Breakfast 7:40 - 8:05		
8:05 Clean & Disinfect 8:05 - 8:15	1st/5th block 8:05 - 9:30		
9:30	Passing 9:30 - 9:35		
9:35	2nd/6th block 9:35 - 11:00		
11:00	Passing 11:00 - 11:05		
11:05	1st Lunch Shift 11:05 - 11:35	3rd/7th block 11:05 - 11:50 <i>~for classes assigned to 2nd lunch~</i> <i>*students return to class after lunch</i>	3rd/7th block 11:05 - 12:35 <i>~for classes assigned to 3rd lunch~</i>
11:35	Passing 11:35 - 11:40		
11:40 Clean & Disinfect 11:40 - 11:50	3rd/7th block 11:40 - 1:05 <i>~for classes assigned to 1st lunch~</i>		
11:50		2nd Lunch Shift  11:50 11:50-12:20	
12:20		Passing 12:20-12:25	
12:25 Clean & Disinfect 12:25 - 12:35		3rd/7th block 12:25 - 1:05 <i>~for classes assigned to 2nd lunch~</i>	
12:35			3rd Lunch Shift 12:35 12:35-1:05
1:05	Passing 1:05-1:10		
1:10 Clean & Disinfect 1:10 - 1:20	Advisory 1:10 - 1:40		
1:40	Passing 1:40 - 1:45		
1:45	4th/8th block 1:45 - 3:10		
3:10	Dismissal 3:10		

Clean & Disinfect Cafe: No Hallpasses	Supervision: Passing Time	Lunch	Class
---------------------------------------	---------------------------	-------	-------



# Student Support

*In-Person*

## Social Emotional Supports

Addressing the social-emotional needs of students remains an important aspect of McCluer North High School and we recognize students will not be ready to engage in formal learning until they feel physically and psychologically safe. Establishing a sense of safety and community may take weeks or even months and all staff are prepared to provide support. As we re-enter school, we will create an intentional focus on social and emotional skill building, mental and behavioral health, personal safety and self-regulatory capacity, which likely regressed due to the lack of social interactions between peers and teachers. If you would like someone to contact you for additional support for your child(ren) please use this [link](#) to make your request. A district representative will contact you within 72 hours.

### Focus Priorities: Connections, Relationship Building, & Routines

- Collaboration between the Ci3T Core Team, counselors, administration, and teachers.
- 6-12 advisory teachers will deliver 7 Mindsets lessons and team building activities.
- PK-12 teachers will facilitate community building circles.
- [School Counselors](#) will deliver lessons to students about exploring and handling feelings, provide individual and small group counseling, and make referrals to outside agencies as needed.
- [School Social Workers](#) are available to assist your family as your student(s) transition back to school
- St. Louis Children's Service brings specialized services and programs to our schools through our [partner agencies](#) and are ready to support students with mentoring and counseling.

### Guidance Office Procedures

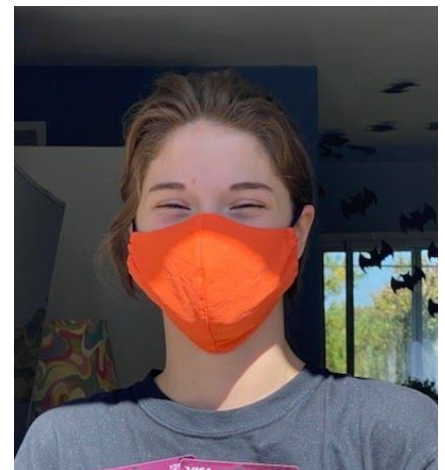
Guidance services will continue to be available to students for academic, behavioral and social emotional support. Students will be encouraged to make an appointment with their counselor to provide the least disruption to their academics and classes. Students can make an appointment by emailing their counselor or stopping by the guidance office. For quick questions students are encouraged to email their counselor directly. Drop in services will still be available for any student needing immediate assistance.

*Virtual*

## Supplies

Items to Bring to School:

- Chromebook fully charged everyday
- Clear backpack
- Extra masks
- Water bottle
- Hand Sanitizer
- Headphones
- Necessary class materials for the day



## Technology

Students will be expected to bring Chromebook to class every day, fully charged. At-home students will be expected to log in to each class via Zoom at the beginning of each hour. If students have an issue with their Chromebook they should do the following:

For Chromebook Tech Support, please click the link.

- <https://onedistrict.fergflor.org/service/portal.asp>
- or call the Help Desk at 824-2299

## Visitors

The district campus will be closed to all visitors. Parents/guardians visiting campus for any reason other than arrival and dismissal must continue to meet virtually.

The front office is closed to non-essential visitors. Parents need to call the school office to check a student in or out. We ask parents to please remain in the car, and a staff member will ensure your child safely reaches your car upon parent request. For safety reasons, recent graduates will not be allowed to visit.

### **It is important to remember:**

- Families must drop students off outside of the building and are not allowed to walk their child inside.
- Drop-offs must be as brief as possible.
- Visitors will not be allowed inside the building.
- Staff members will be present to ensure students safely enter and exit the school.



---

